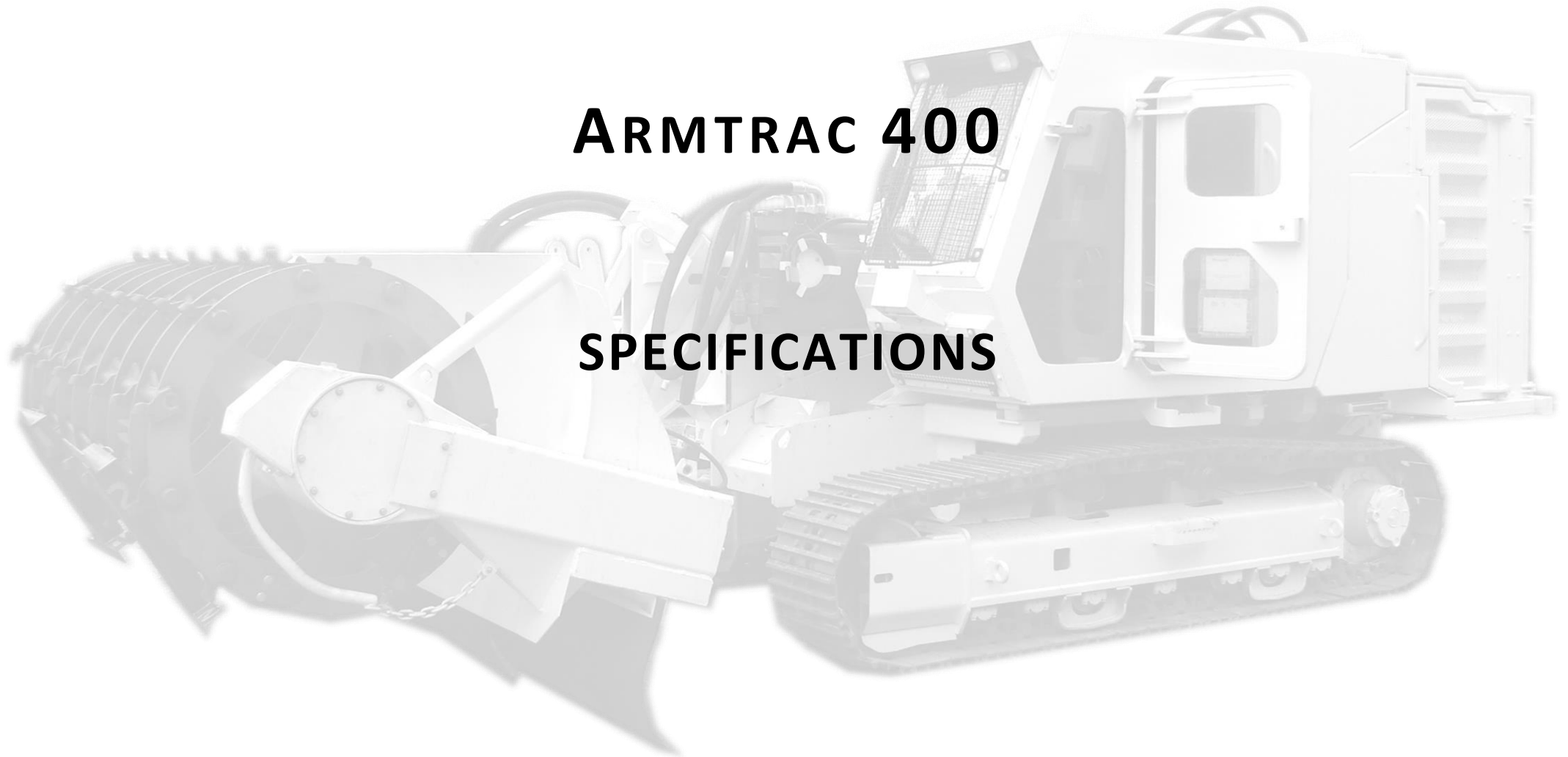
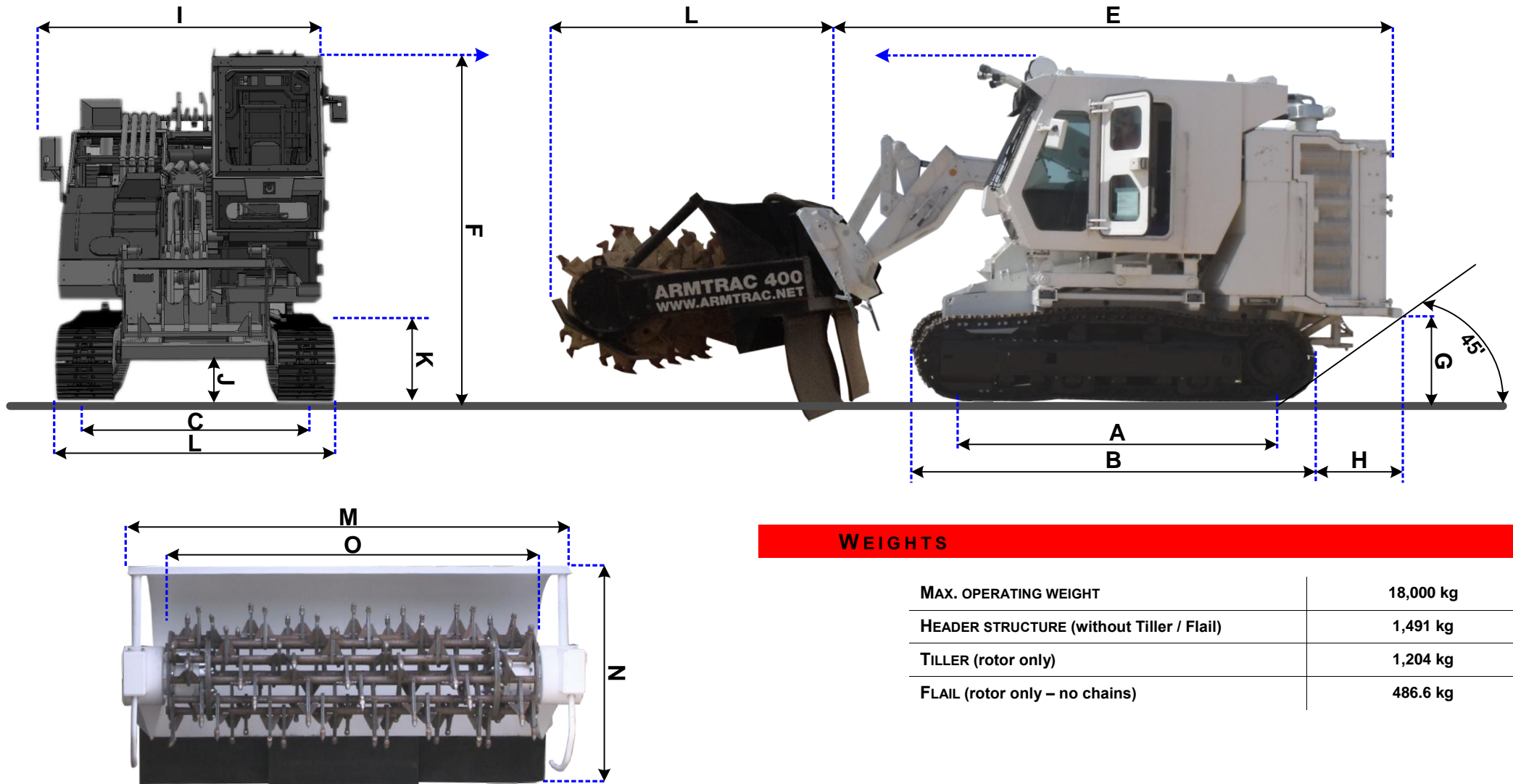




# ARMTRAC 400

## SPECIFICATIONS





**WEIGHTS**

|                                           |           |
|-------------------------------------------|-----------|
| MAX. OPERATING WEIGHT                     | 18,000 kg |
| HEADER STRUCTURE (without Tiller / Flail) | 1,491 kg  |
| TILLER (rotor only)                       | 1,204 kg  |
| FLAIL (rotor only – no chains)            | 486.6 kg  |

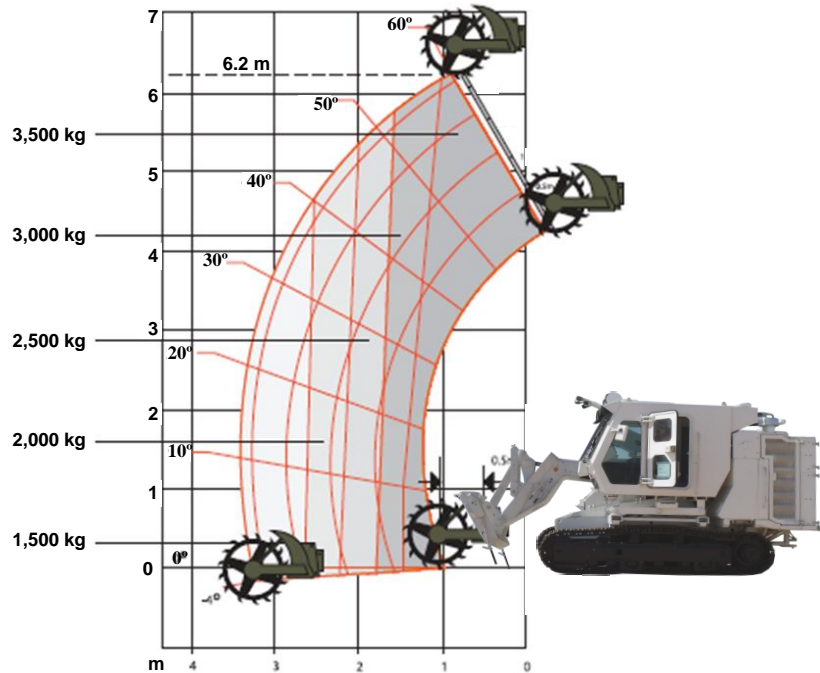


**STATIC DIMENSIONS**

|          |                                                        |                |
|----------|--------------------------------------------------------|----------------|
| <b>A</b> | Track length on ground                                 | <b>3090 mm</b> |
| <b>B</b> | Undercarriage overall length                           | <b>3940 mm</b> |
| <b>C</b> | Track gauge                                            | <b>1990 mm</b> |
| <b>D</b> | Width over tracks (500 mm track shoes)                 | <b>2510 mm</b> |
| <b>E</b> | Transport length – overall length to front of carriage | <b>5550 mm</b> |
| <b>F</b> | Transport height                                       | <b>3395 mm</b> |
| <b>G</b> | Undercarriage height                                   | <b>1000 mm</b> |
| <b>H</b> | Undercarriage to rear chassis                          | <b>500 mm</b>  |

|          |                               |                |
|----------|-------------------------------|----------------|
| <b>I</b> | Width of superstructure       | <b>2795 mm</b> |
| <b>J</b> | Ground clearance              | <b>470 mm</b>  |
| <b>K</b> | Track height                  | <b>880 mm</b>  |
| <b>L</b> | Tiller length                 | <b>2487 mm</b> |
| <b>L</b> | Flail length                  | <b>2000 mm</b> |
| <b>M</b> | Tiller / Flail width          | <b>3781 mm</b> |
| <b>N</b> | Tiller height                 | <b>1133 mm</b> |
| <b>N</b> | Flail height                  | <b>2100 mm</b> |
| <b>O</b> | Tiller + Flail clearance path | <b>2905 mm</b> |

**LIFT PERFORMANCE**



|                              |                 |                     |
|------------------------------|-----------------|---------------------|
| Max lift capacity            | <b>kg(lb)</b>   | <b>3600(7936)</b>   |
| Lift capacity to full height | <b>kg(lb)</b>   | <b>3600(7936)</b>   |
| Lift capacity at full reach  | <b>kg(lb)</b>   | <b>1500(3307)</b>   |
| Lift height                  | <b>m(ft-in)</b> | <b>6.20 (20-4)</b>  |
| Reach at maximum lift height | <b>m(ft-in)</b> | <b>0.87 (2-10)</b>  |
| Max forward reach            | <b>m(ft-in)</b> | <b>3.30 (10-10)</b> |
| Reach with 1 Tonne load      | <b>m(ft-in)</b> | <b>3.30 (10-10)</b> |
| Placing height               | <b>m(ft-in)</b> | <b>5.42 (17-10)</b> |



**ENGINE**

Latest technology & advanced design provides low fuel consumption, reduced noise, high torque & power output, total reliability & minimal maintenance.  
 Two-stage, dry type air filter with primary & safety elements.

|                                  |                       |                       |
|----------------------------------|-----------------------|-----------------------|
| Manufacturer                     |                       | Deutz                 |
| Model                            |                       | BF6M                  |
| Displacement                     | <b>cm<sup>3</sup></b> | 11906                 |
| No. of cylinders                 |                       | 6                     |
| Bore size                        | <b>Mm</b>             | 132                   |
| Stroke                           | <b>Mm</b>             | 145                   |
| Aspiration                       |                       | Turbo intercooler     |
| <b>Power rating</b>              |                       |                       |
| Power @ 1900                     | <b>kW (HP)</b>        | 300 kW                |
| <b>Torque rating</b>             |                       |                       |
| Torque @ 1300rpmNm (lb ft)       |                       | 425 (313.5)532(392.4) |
| Fuel consumption                 |                       | 35 – 45 l/hr          |
| Water cooled working temperature |                       | 55° ambient           |

**BOOM & CARRIAGE**

The Boom is manufactured on high tensile steel that can extend & retract, with quick-fit self-Levelling carriage, with a lever operated pin locking system. This allows the Armtrac 400 to be A multi-function machine.  
 Boom fitted with hard wearing low maintenance pads.  
 Auxiliary hydraulic service fitting as standard.

**SAFETY CHECK VALVES**

Fitted to carriage tilt, telescopic & boom lift rams.

**TRACK DRIVE**

Type: Fully hydrostatic, two speed.  
 Travel motors: Variable swash axial piston type, fully guarded within undercarriage frame.  
 Final drive: Planetary reduction, bolt-on sprockets.  
 Travel speed: High 7.0 km/hr. continuous.  
 Travel effort: 151 kN

**BRAKES**

Service brakes: Hydraulic counter balance valve to prevent over-speed on gradients.  
 Parking brake: Disk type, spring applied, and automatic hydraulic release.

**ELECTRICS**

24 V negative earth. 145 AH battery. 55 Amp alternator. Full load lighting. Reversing light. Horn.  
 Reverse alarm optional.  
 Remote controlled to 1000 meters.

**STEERING**

One lever 4 position joystick control (hard-wired & remote control) forward / reverse / left / right  
 Left & right position allows one track to turn in one direction & the other track in the opposite direction.  
 This allows the machine to rotate on the spot.

**DELUX CAB**

Quiet & comfortable cab constructed from 10 mm armoured steel & 37 mm Polycarbonate tinted glass, conforming to 7.6 NATO ball, ROPS ISO 3471 & FOPS ISO 3449. Front window bars  
 Screen wash / wipe & heater / screen demister. Opening roof escape hatch. Audio-visual warn system for coolant temp, water in fuel, engine oil press air cleaner, battery, transmission oil temp & pressure warnings. Adjustable steering column as well as adjustable suspension seat.



**SERVICE CAPACITIES**

|                |                        |                  |
|----------------|------------------------|------------------|
| Fuel Tank      | <b>Litres (UK gal)</b> | <b>470 (100)</b> |
| Hydraulic Tank | <b>Litres (UK gal)</b> | <b>800 (170)</b> |
| Coolant        | <b>Litres (UK gal)</b> | <b>21 (4.5)</b>  |
| Track Gearbox  | <b>Litres (UK gal)</b> | <b>5 (1)</b>     |
| Splitter Box   | <b>Litres (UK gal)</b> | <b>10 (2)</b>    |

**HYDRAULICS (OPERATING @ 2000 RPM)**

|                                    | <b>Relief Valve Setting</b> | <b>Maximum Flow</b> |
|------------------------------------|-----------------------------|---------------------|
| <b>Variable Displacement Pumps</b> |                             |                     |
| Flail / Tiller                     | 350 bar                     | 350 L/min           |
| Track per track                    | 343 bar                     | 140 L/min           |
| <b>Gear Pumps</b>                  |                             |                     |
| Auxiliary                          | 250 bar                     | 60 L/min            |
| Oil cooler fan                     | 100 bar                     | 30 L/min            |
| Water cooler fan                   | 100 bar                     | 30 L/min            |

**FILTRATION**

The hydraulic components are protected by the highest standard of filtration to ensure long Hydraulic fluid & component performance.

|                  |                            |
|------------------|----------------------------|
| In tank          | 90 micron suction strainer |
| Main return line | 25 micron paper elements   |
| Drive lines      | 10 micron pressure filter  |

**HYDRAULIC CYLINDERS**

Double acting type with bolt up end caps & hardened steel bearing bushes. Hose burst check valves for boom & carriage rams.

Accumulators fitted to carriage ram for cushioning against mine blast pressure.

**CLEARANCE CAPABILITIES**

| <b>Tiller</b> |         | <b>Flail</b> |         |
|---------------|---------|--------------|---------|
| Picks         | 62      | Chains       | 76      |
| Diameter      | 1136 mm | Diameter     | 2200 mm |
| Rotation      | 350 rpm | Rotation     | 350 rpm |

**Clearance Speeds :**

|                                 |                            |
|---------------------------------|----------------------------|
| Light soil / medium vegetation  | 21,000 m <sup>3</sup> /Hr. |
| Medium soil / medium vegetation | 17,000 m <sup>3</sup> /Hr. |
| Heavy soil / heavy vegetation   | 12,000 m <sup>3</sup> /Hr. |
| Maximum working depth           | 50 cm                      |

Explosive charge tested to anti-tank 8.8 & anti-fragmentation mines. Damage required replacement of chains & picks only.

**UNDER CARRIAGE**

|                           |                                   |
|---------------------------|-----------------------------------|
| Recovery point            | Front & back                      |
| Upper & lower rollers     | Heat treated, sealed & lubricated |
| Track adjustments         | Grease cylinder type              |
| Track idler               | Sealed & lubricated               |
| Recoil                    | Spring 2                          |
| Track shoe                | 500 mm                            |
| Roller & shoe (each side) | Upper rollers: 2                  |
|                           | Lower rollers: 7                  |
|                           | Track shoes: 43                   |
|                           | Track guides: 1                   |

**OPTIONS & ACCESSORIES**

Options: Multi-purpose bucket / blade, fork lift tines, backhoe, standard bucket, tool box & Sifter.